

# ORMIG

*since 1949*



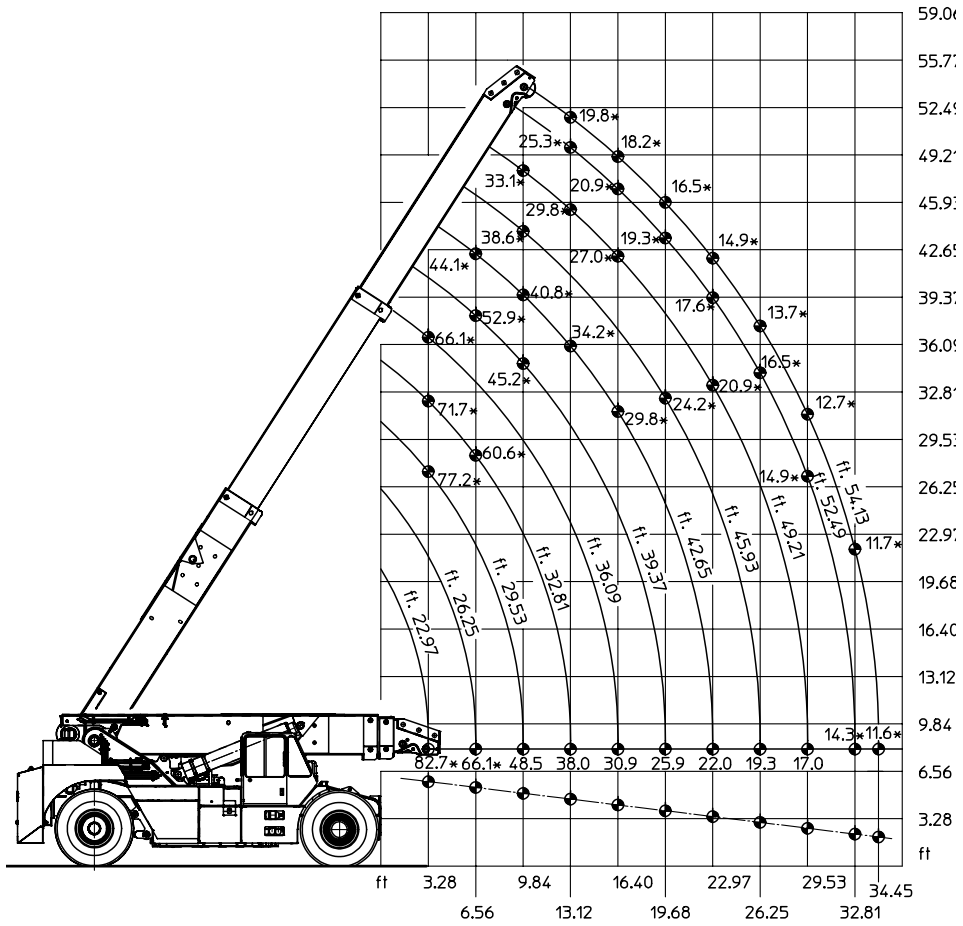
## 75 tm



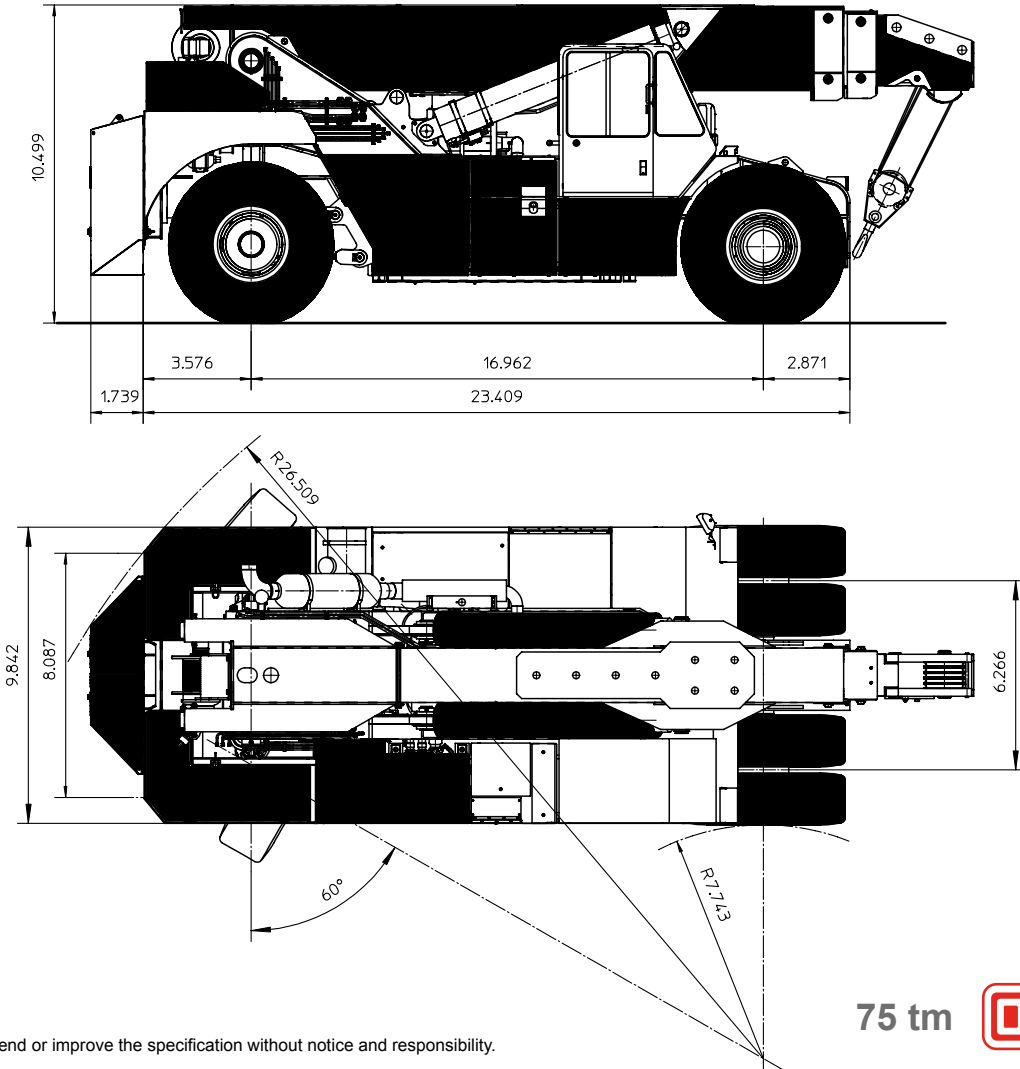
# TECHNICAL FEATURES

<b>Carrier</b>	4 × 2 × 2	<b>Hydraulic system</b>	Fed by a variable delivery pump with electro-proportional distributor; compensated, anti-saturated. Electronic keysender with four proportional operations. Hydraulic oil tank capacity 510 litres.
<b>Frame</b>	Monolithic structure formed by two frame side members connected in the front and rear part in the position of the front axle and of the rear gantry location.	<b>Safe load device</b>	Electronic - active type - with locking of the operations which can cause dangerous conditions when reaching the max crane capacity.
<b>Engine</b>	FPT type CURSOR 9, power 305 kW (415 HP) at 2200 rpm, exhaust as per Directive 97/68/CE EUROMOT 4, electronic control. Water cooling. Fuel tank capacity 300 litres.	<b>Safety regulations</b>	The crane is equipped with all safety devices as per regulations in force. It complies with the requirements of Directive 2006/42/CE "Machine Directive" and to the EN 13000. Structure according to regulations EN 13001. Declaration of Conformity CE.
<b>Speed gearbox</b>	Transmission with ZF torque converter, 4 forward and 3 reverse speeds. By hand or automatic control. Max speed about 25 Km/h.	<b>Road certification</b>	The crane can be certified for road travelling.
<b>Axles</b>	Driving front axle with differential-gear. Rigid suspension. Steering rear idle axle with lockable pneumo-hydraulic suspension.	<b>Weight</b>	Total weight 36.000 Kg - Front axle 18.000 Kg - Rear axle 18.000 Kg
<b>Tyres</b>	Twin tyres in the front axle and single tyres in the rear axle, type 18.00-R-25.	<b>Equipment on request</b>	<ul style="list-style-type: none"><li>• Auxiliary counterweight</li><li>• Various lengths special fly-jibs</li><li>• Fix hook at boom top</li><li>• Self-levelling forks complete with sideshift device for containers and marbles blocs handling</li><li>• Spare wheel</li><li>• Special jaws for various performances</li></ul>
<b>Steering</b>	Hydraulic steering with Danfoss hydraulic drive.		
<b>Brakes</b>	In compliance with EEC regulations for road travel, at hydraulic control. Multiple discs at oil bath in the front axle; dry disc at rear axle. Two independent circuits. Mechanical parking brake, spring-type acting in the transmission at front axle input.		
<b>Cab</b>	Steel structure, right side. Wide visibility for the operator is provided. It is complete with rearview mirrors, instrumentation, windshield wipers, heater, adjustable anatomical seat. The various movements are controlled by levers equipped with electric device against unexpected operations.		
<b>Electric system</b>	24 v - 800 W alternator, 2 batteries of 12 V 180 Ah Control of the load capacity, suspension and speed according to the lifted load by means of electronic system connected with CAN-BUS connection.		
<b>Boom</b>	Fabricated from box-type plate at high strength. It is connected to the frame by means of rear gantry. Telescopic boom with a base section and two extensions at independent hydraulic extraction control. Extensions extraction by means of two double acting cylinders. Derricking is provided through two double acting cylinders.		
<b>Winch</b>	Oleodynamic with automatic brake. Adjustable speed from 0 to 50 m/min. with 6000 daN capacity at 5th layer single rope. Max rope length 131 m dia. 18 anti-rev. Type A7 ALC		

# Din 15019.2 Lifting capacity chart (short tonnes)



## General Dimensions



It's ORMIG right to amend or improve the specification without notice and responsibility.