



Since 1949

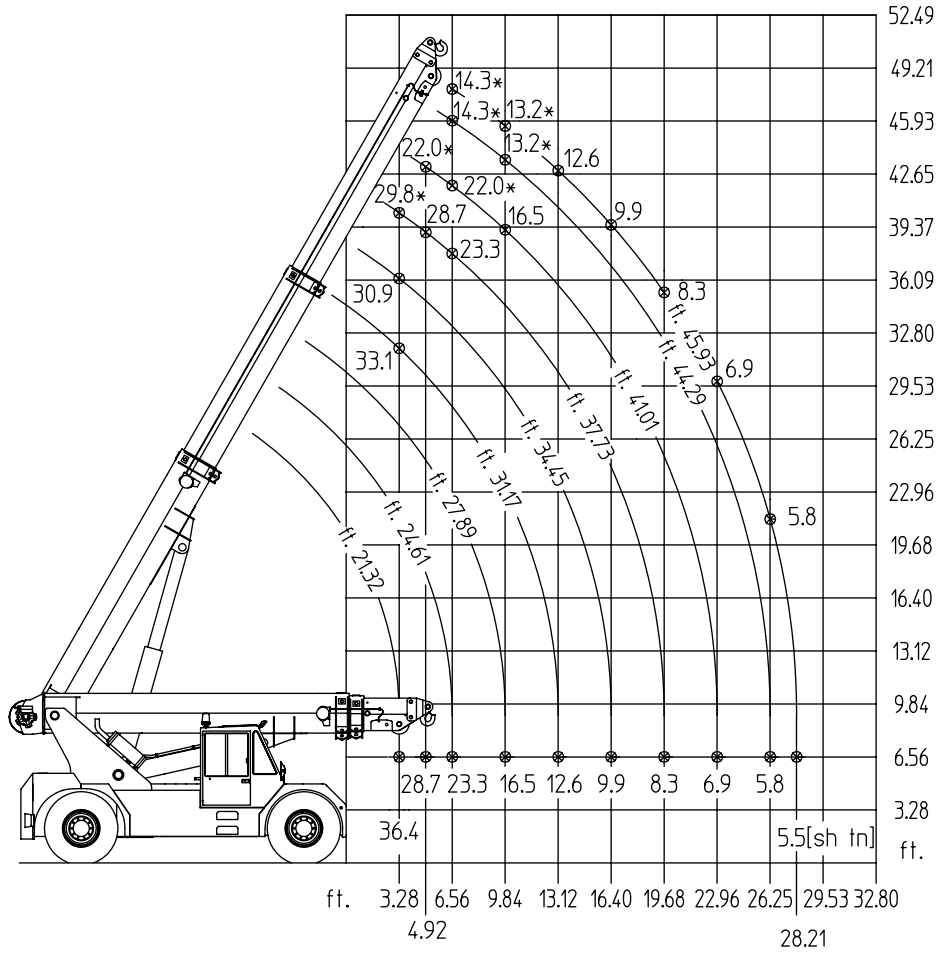


35 tm

TECHNICAL FEATURES

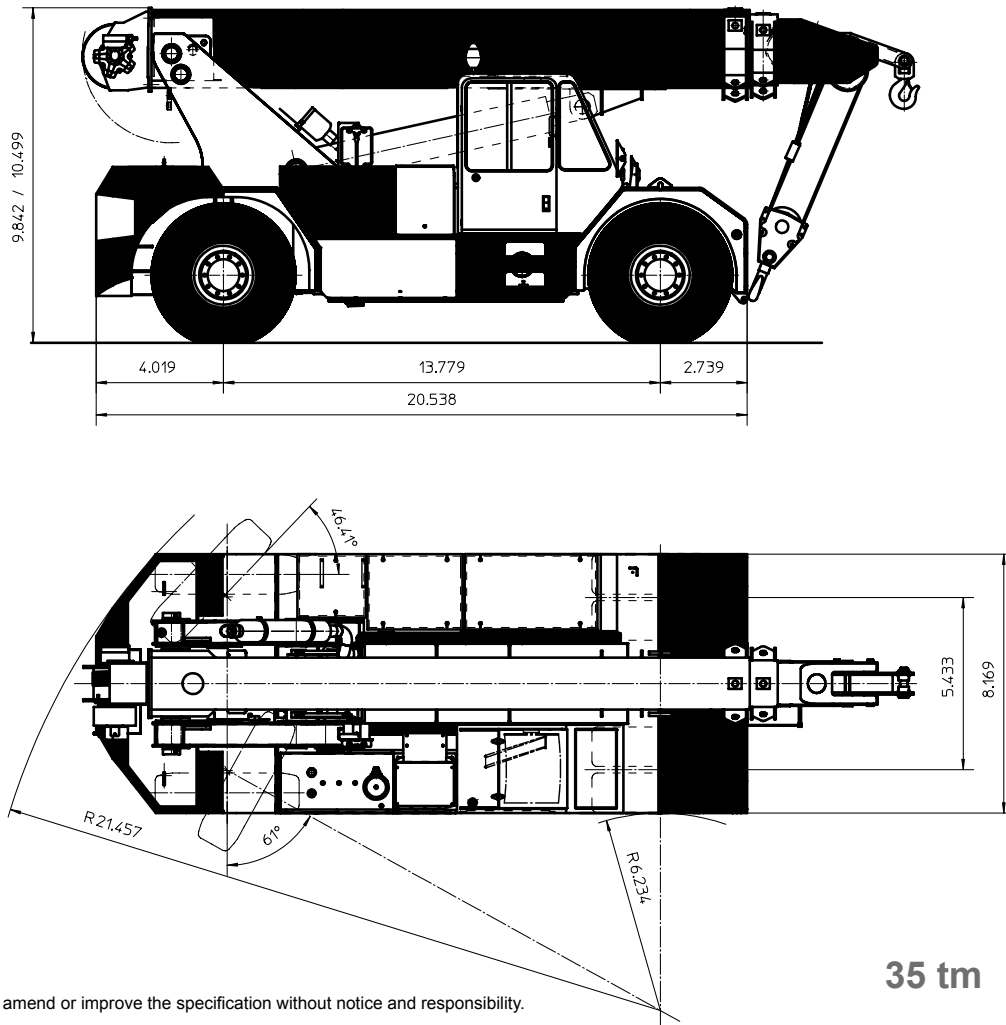
Carrier	4 x 2 x 2	Winch	Oleodynamic with automatic brake. Adjustable speed from 0 to the maximum value, winch pull: 5750 kg. Max. rope length 115 m, dia. 16 mm, drum dia. 360 mm.
Frame	Structure formed by two frame side members fabricated from bended plate at "C" shape and box-type, connected by means of crosspieces in the front and rear part corresponding to the axles location.	Hydraulic system	Equipped with variable delivery pump having 246 max. delivery and compensated anti-saturation hydraulic distributor. Braking and locking valves on the boom and extensions cylinders. Calibrated valves on the distributor of the hydraulic system. Hydraulic oil tank capacity 400 litres.
Engine	Diesel NEF N67 ENTX24.00, 6 cylinders turbo charge, displacement 6728 cm ³ , power 134 kW at 2200 rpm Max torque 800 Nm at 1400 rpm Exhaust as per Directive 97/68/CE III A. Water cooling. Fuel tank capacity 300 litres.	Safe load device	Electronic safe load device, active type, providing cut out of the controls which can cause dangerous conditions when the rated load is reached.
Speed gearbox	DANA transmission with torque converter, 4 forward and 4 reverse speeds. Max travel speed 25 Km/h.	Safety regulations	The crane is equipped with all safety devices as per regulations in force. It complies with the requirements of Directive 2006/42/CE "Machine Directive" and to the EN 13000. Structure according to regulations EN 13001. Declaration of Conformity CE.
Axles	Front driving axle with rigid suspensions. Rear steering axle, central oscillation with limit switches is provided.	Road certification	The crane can be certified for travelling on road.
Tyres	1400-24 PR28, double tyres at front axle and single tyre at rear axle.	Weight	Total weight 28000 Kg Front axle 10000 Kg Rear axle 18000 Kg
Steering	Hydraulic steering system with one main pump having 109 litres/min. delivery and an emergency pump fitted in the front axle. Min. outer turning circle radius: 6,56 m.	Equipment on request	<ul style="list-style-type: none">• Auxiliary counterweight• Various lengths special fly-jibs• Fix hook at boom top• Spare wheel• Self-levelling forks complete with sideshift device
Brakes	In compliance with EEC regulations for road travel. Service brake at hydraulic control. Multiple discs in oil bath for front axle, dry disc for rear axle. Two independent circuits. Mechanical parking brake, spring type, acting to the front wheels, control by electric selector.		
Cab	Steel structure. Wide visibility for the operator is assured. Complete with rearview mirrors, full controls, windshield-wipers, heater, adjustable anatomical seat. The various movements are controlled by levers equipped with electric device against unexpected operations.		
Electric system	24 V - 90 A alternator - Starting motor - 2 batteries of 12 V - 100 Ah		
Boom	Fabricated from plate at high strength. It is connected to the frame by means of rear gantries. Telescopic boom with one base section plus 2 extensions controlled by two hydraulic double action cylinders. A double-action cylinder for the derricking control.		

Din 15019.2 Lifting capacity chart (tonnes)



* Capacities determined by factors other than tipping load

General Dimensions



It's ORMIG right to amend or improve the specification without notice and responsibility.